





An exhilarating hillside estate nestled on 5 acres of beautifully landscaped and undulating slopes, surrounded by spectacular panoramic views, RiversEdge offers 37 luxurious villas on approximately 1/8th of an acre each. Its unique exterior meshes a palate of color creating a striking visual display against the back-drop of the blue-sky.

Situated along Limuru Road minutes from the Village Market, this iconic site offers lofty 4 bedroom all ensuite villas nestled in nature's best yet just within minutes reach of Nairobi's main centers.

Switch off from the monotony of city life and treat yourself to a delightful journey of discovery and indulgence in this green paradise. An ideal getaway just minutes from the City!

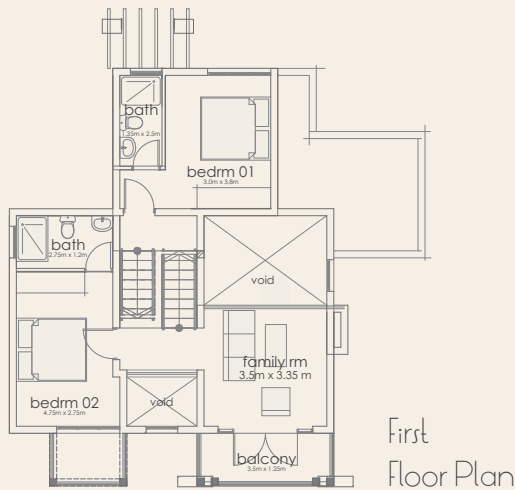
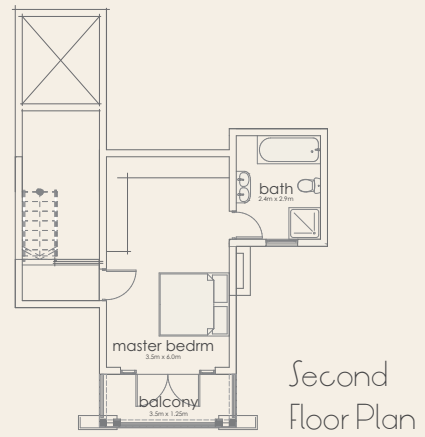
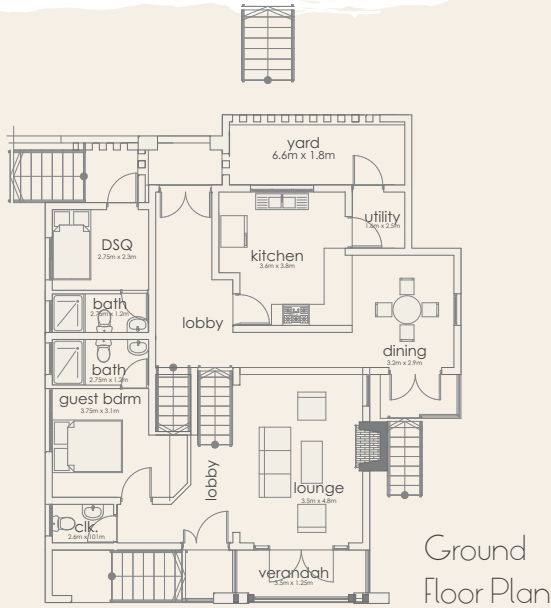


- All ensuite 4 bedroom villa of approximately 2,625sq.ft
- Set on three floors
- Spacious dining & Lounge opening onto balcony
- Family room with a spectacular balcony
- Well-sized kitchen with yard
- Lavish top floor master ensuite with balcony
- DSQ for 1
- Car park for 2



Villa One

Views across the valley

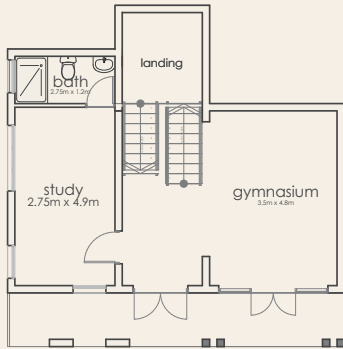


- Deluxe all ensuite 4 bedroom villa of approximately 3529 sq.ft
- Set on four floors
- Spacious dining & lounge opening onto balcony
- Family room with balcony
- Lower ground floor entertainment floor with study and gym space
- Well-sized kitchen with yard.
- Lavish top floor master ensuite with balcony
- DSQ for 1
- Car park for 2

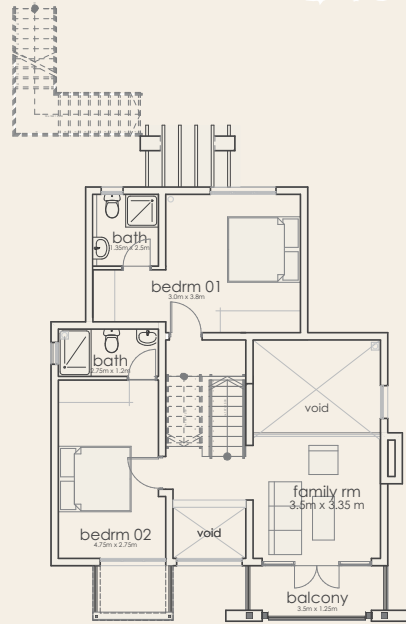


Villa Two

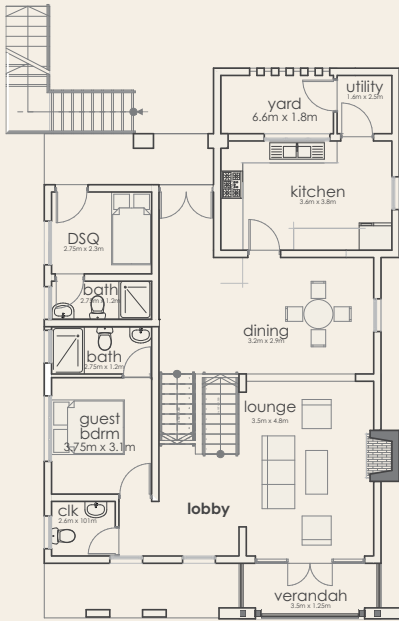
Fronting the river



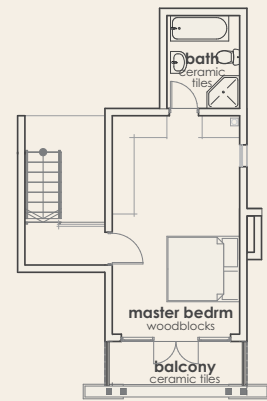
Lower Ground Floor Plan



First Floor Plan



Ground Floor Plan



Second Floor Plan



Interiors

Common Areas:

Walls: Masonry walling with natural stone and paint finish.

Main Gate: Double gate with a pedestrian access.

Drive ways and parking: Concrete paving blocks.

Ceiling: Vaulted Open truss

Staircase: Treads in mahogany timber.

Balustrades: Wrought iron with timber handrail.

Kitchen: Cabinetry fully fitted by specialist with granite tops.

Kitchen Yard: Cabro paving.

Water supply: Common borehole supplying to individual water tanks.

Villas

Roof: Decra roofing on timber structure.

Floor: Wood Block to the main areas and ceramic tiling to wet areas.

Windows: Metal casement with 4mm thick clear gazing.

Doors: Various as per schedules (metal casement tempered glass, solid core flush door with laminated veneer and imported steel paneled security door).



Amenities

- Internet connectivity
- Intercom connections
- Telephone and TV conducting
- Water Tanks with pump/
borehole
- Emergency lights
- Designated garbage disposal
areas
- Electric perimeter wall



Location



Key Distances

- 20 minute drive to Westlands
- 25 minute drive to CBD
- 10 minute drive to UN Avenue
- 7 minute drive to Village Market
- 5 minute drive to Runda
- 3 minute drive to Limuru Golf and Country Club

RiversEdge is conveniently located approximately 9Km from the Village Market, along Limuru road, and has the significant advantage of being located on the main Limuru road. It's a new-growth area with excellent infrastructure networks lending it easy access into Nairobi main centers'.

Close by facilities include Sovereign Suites hotel, the Limuru golf and country club and a myriad of schools including Peponi School, ISK, School of the Nations & Roselyn.

Developer

Kore Forests Ltd

Architects

U Design

Lawyers

Ochieng, Onyango, Kibet, Ohaga

Development Consultants & Project Managers

Limojade Management Ltd

Sole Selling Agents



HassConsult Limited ABC Place Waiyaki Way
P.O. Box 14090 - 00800 Nairobi Kenya, T: +254 20 4446914 F: +254 20 4447200
M: 0722 204764/5, 0733 629786
E: info@hassconsult.co.ke www.hassconsult.co.ke