

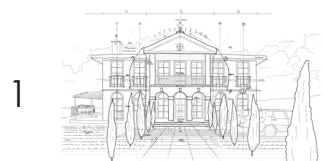


THE
GREEK REVIVAL HOUSE

TIGONI, KENYA

PROPORTION

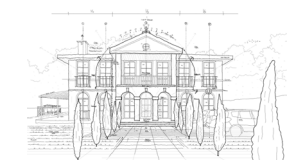
The Greek Revival House is characterized by its symmetrical and balanced proportions, typically featuring a bold, pedimented portico with arched openings. The symmetrical facade is divided into two equal halves.





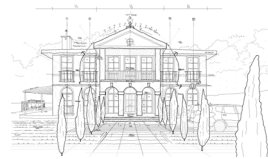
THE GREEK REVIVAL HOUSE

Greek Revival was an architectural movement of the late 18th century, predominantly taken up in Northern Europe and the United States. This powerful vernacular of architecture revived a style of ancient Greek architecture, specifically the Greek temple, with varying degrees of thoroughness and consistency.



CRAFTSMANSHIP

The intricate detailing radiates exquisite taste, with carved molding details accentuating the architectural lines of the doors and windows.



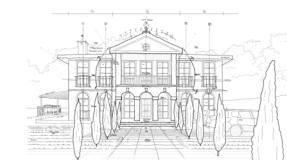
Notable buildings that embody this style include The State House in Nairobi, The United States Capitol Building, The Lincoln Memorial, The British Museum in London and The Parliament Building in Austria.





TRANSITIONAL

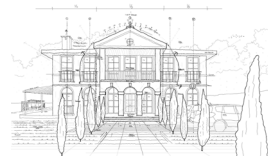
Informed by 200 years of Greek Revival Architecture this home is built in a transitional style. Fusing the best of both worlds, the transitional style takes the Greek Revival's classic balance and symmetry merging it with modern sleek lines, open concepts, and a minimalist aesthetic.



SPIRAL STAIRCASE

Approaching the front door is a great curving stair that leads to the family room upstairs. Antique timber and metal balustrades adorn this central stair.

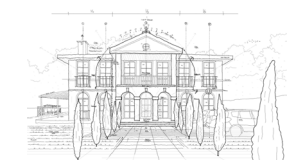
Artisans were commissioned to execute the delicately moulded wrought patterns to help bring subtle drama to the lobby. Below the staircase is a secondary passage to the lounge that also serves as a credenza space for additional storage.





KITCHEN & DINING

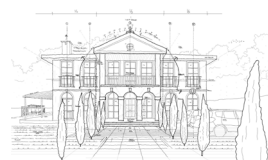
The kitchen and dining area have an open plan configuration while providing for privacy from the lounge space. The breakfast counter divides the kitchen and dining maintaining an open experience.





WINE CABINET

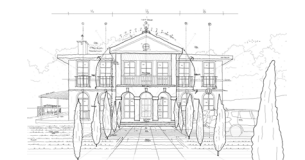
The wine cabinet has a fridge under the counter for drinks and a granite prep counter. Diamond storage area for storing favorite bottles is included with a large mirror above the counter to enhance the space.





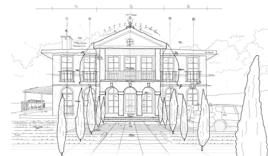
LOUNGE

The living room offers a serene and secluded atmosphere, providing ample opportunity for independent relaxation. Towering vertical windows seamlessly integrate the space with the manicured front lawn and entertainment deck situated at the side.



FAMILY ROOM

The white open truss design celebrates the structure of the roof through the bolting and patterns created by the truss. White tones are used on the timber paying tribute to the white ceilings used in the traditional Greek revival house.

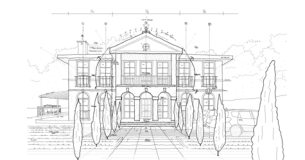






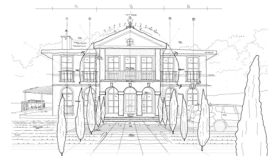
FAMILY BALCONY

The extended stair balcony opens up views towards the clubhouse while creating a covered entrance porch below.



EXCEPTIONAL

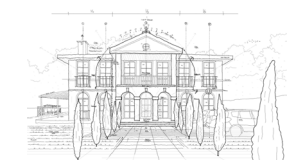
The interior exudes grandeur with exquisite finishes, wooden floors, and ceilings. Juliette balconies and tall arched openings add opulence and elegance to an extraordinary level.





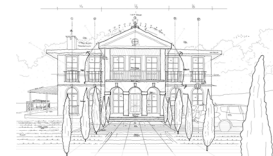
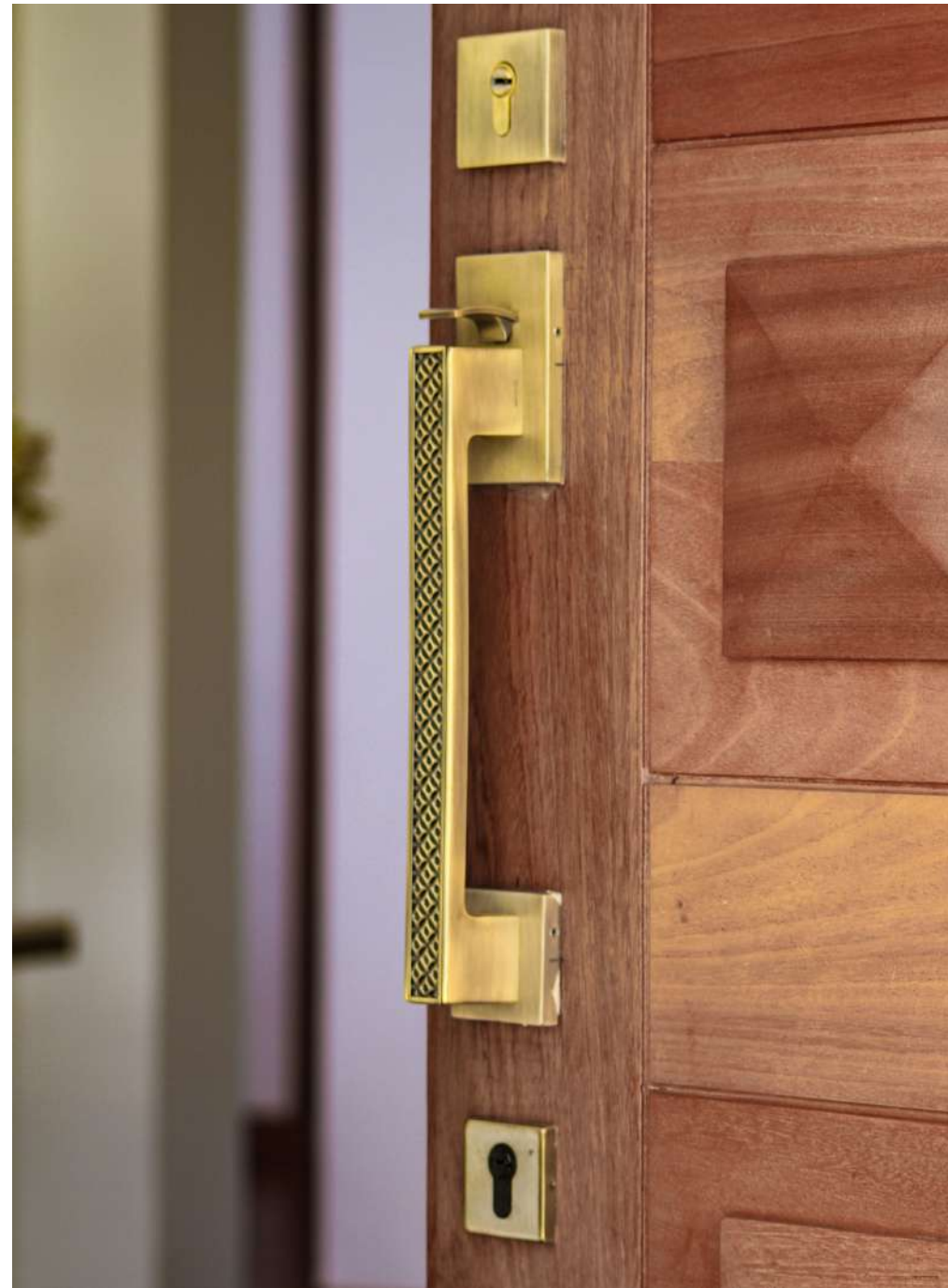
BEST BRANDS

The house prides itself as a branded luxury home sourcing the best in- class brands such as Hansgrohe further contributing to quality and reliability of everything from bathroom to light fittings.



FINEST FINISHES

From Bosch kitchen appliances to the Leather-patterned granite floor tiles adorn the kitchen. Sleek Black Hans-Grohe taps and antique brass door fittings blend in with the steel and hardwood doors.

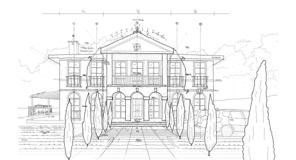






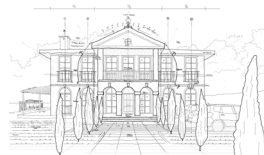
JULIETTE BALCONIES

Aesthetically, Juliette balconies offer a timeless, elegant touch that brings depth to the walls of the house. The traditional balcony design, is a decorative tier of metal bars and laser cut screens. The balcony protrudes from the external face of the window affording the occupant fresh air without completely leaving the comfort and safety of the house.



INTRICATE MOULDINGS

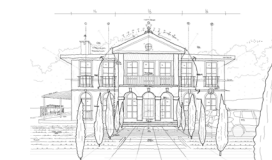
Hand curved moulding details are used to help accent architectural lines of the structure. The moulding details line doors and windows further adding a layer of depth to the character of the house.



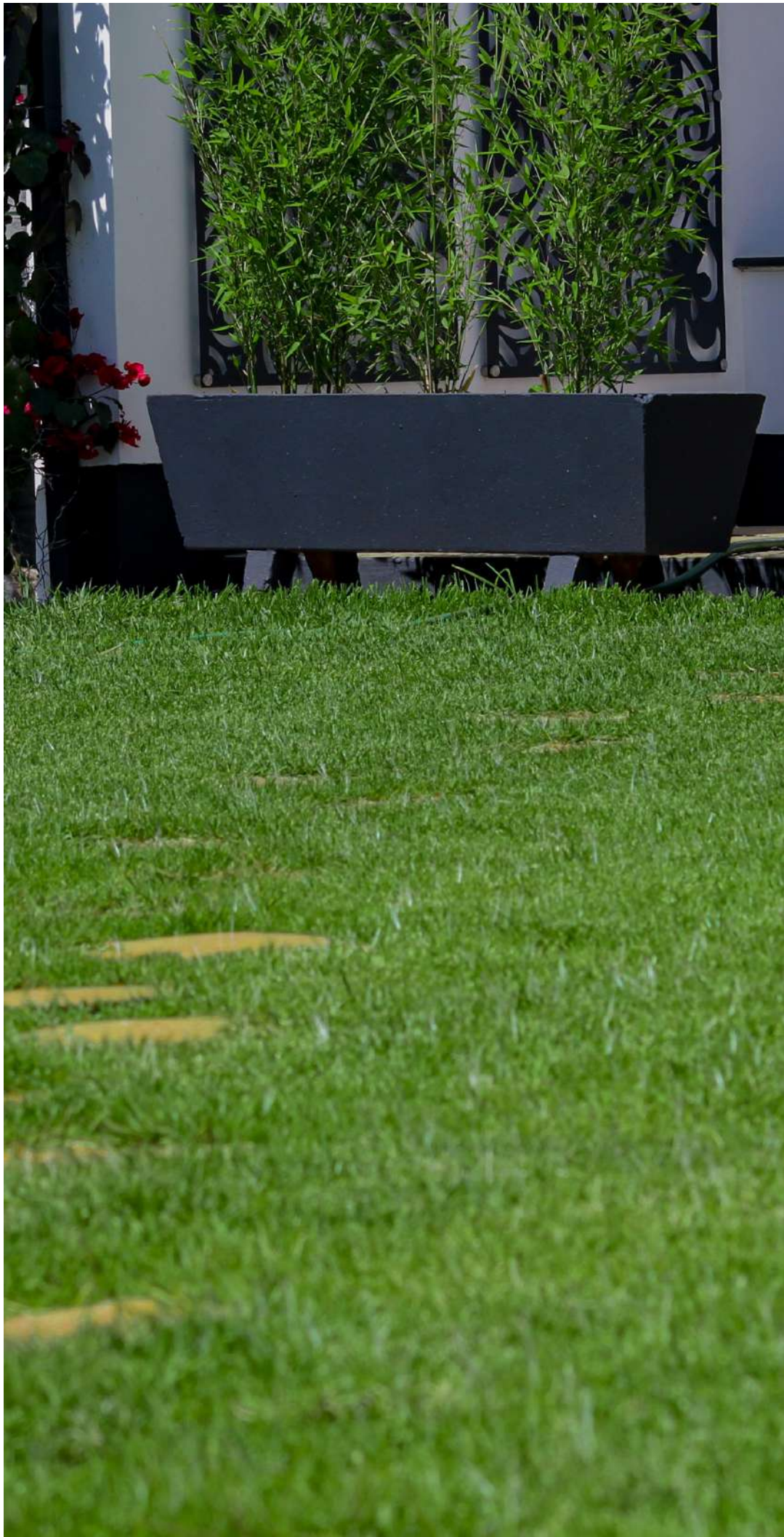


ENTERTAINMENT DECK

Abutting the lounge is the entertainment deck and feature wall. Both spaces are covered by glass to shield users from direct sun and rain. A bar counter complete with a built in TV wall, basin and under storage serve the space.

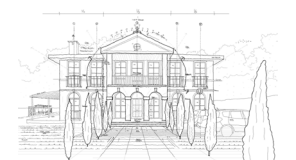






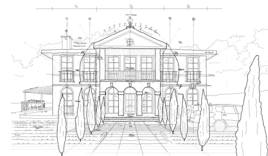
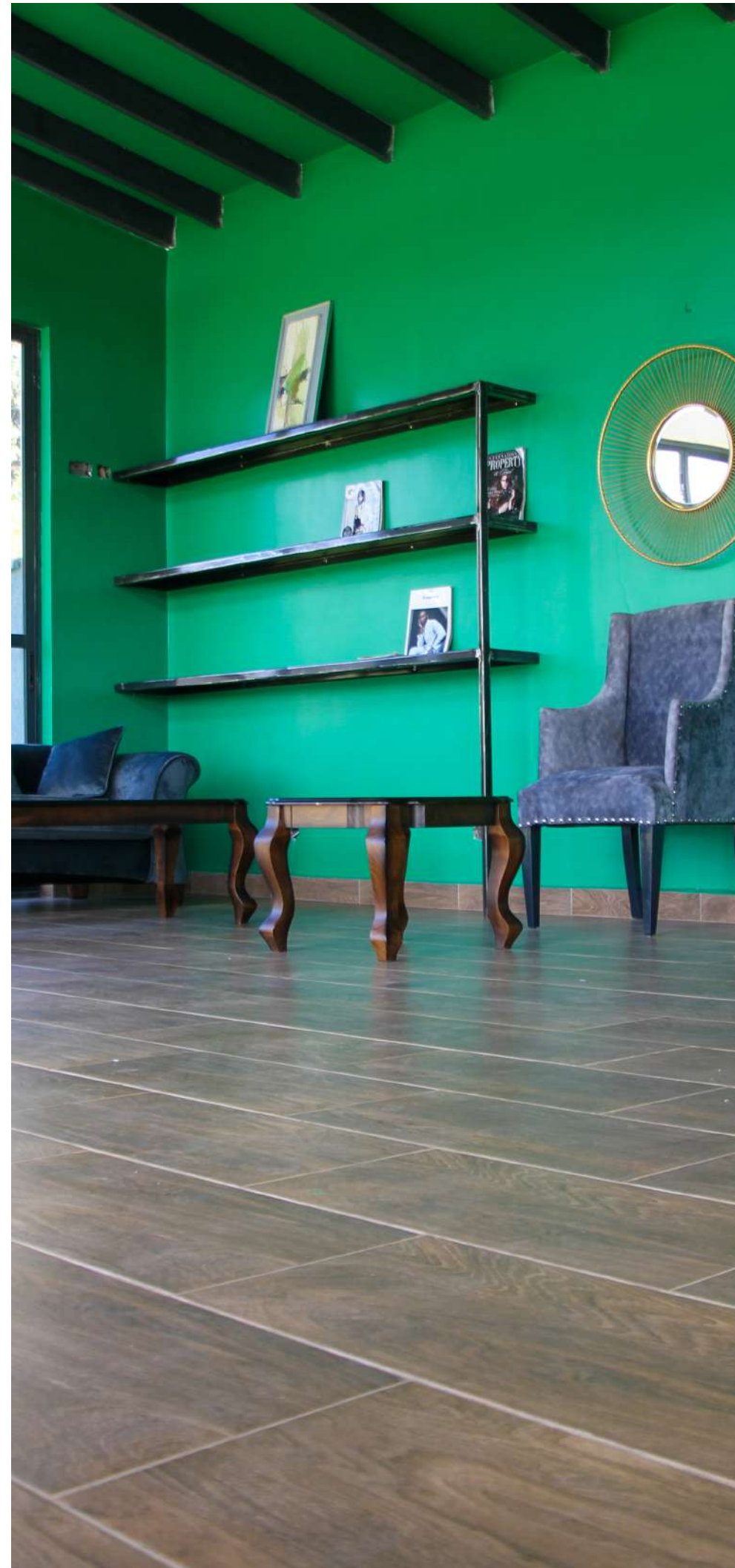
MANICURED LAWN

The home welcomes guests with a soft, manicured lawn, elegant timber log stepping rounds, and symmetrical vertical trees along the driveway. Flower beds and potted plants provide privacy to the patio area, while a vegetable garden is located at the back for the adjacent kitchen.



COMMUNITY

The Greek Revival house sits in a beautiful and secure gated neighbourhood at Kentmere.







www.thegreekrevival.co.ke